



**GE**  **MAX**

**TUTORIAL**  
**WEB MAPS**

# Web Maps

## DESCRIPTION

- Web Map is used to display survey over a web map or a WMS Server, WMS can be defined entering the URL, user and password

## GOAL

- How to visualize and select web map
- How to create surfaces and raster images from web map

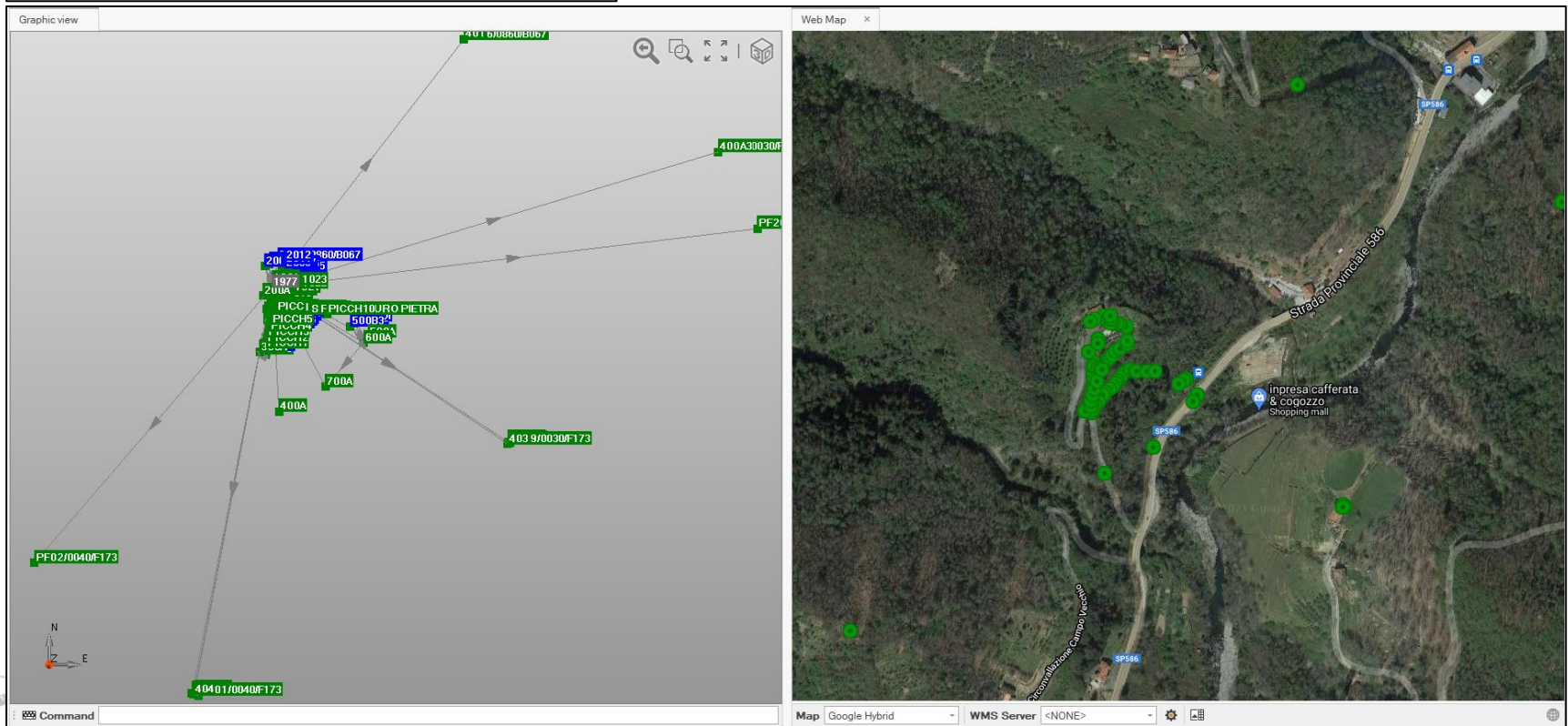
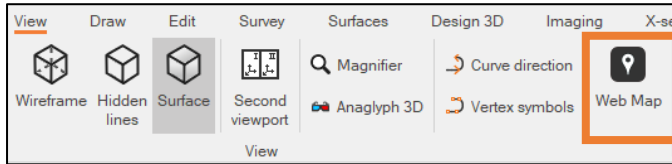
## DATA

- Survey GPS-TPS.gfdoff



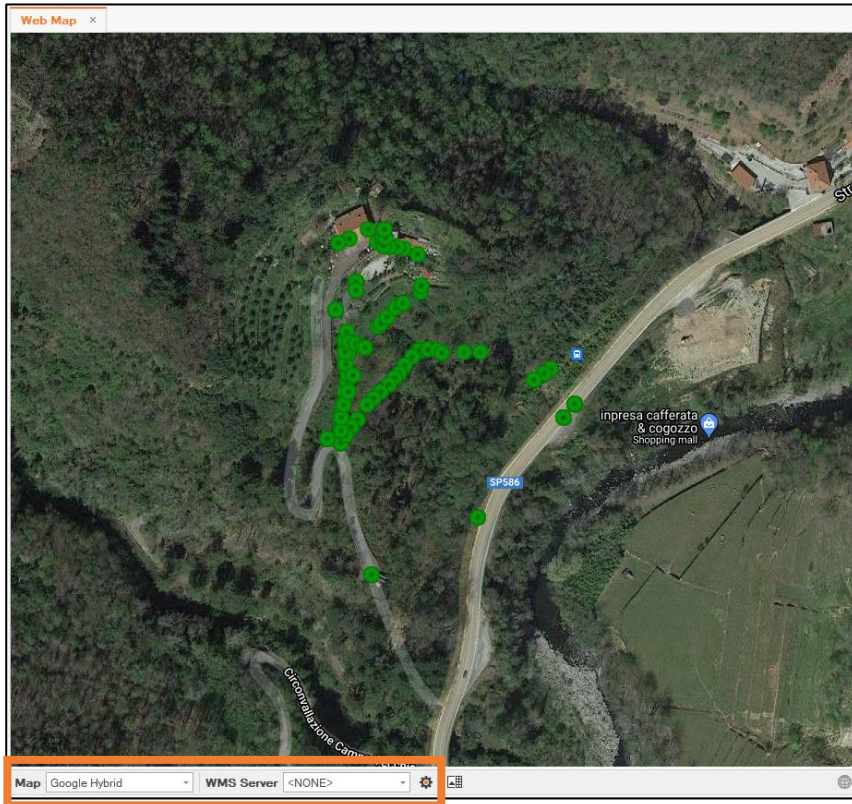
# WEB MAPS

- Select Web Map from the View menu to open the second view



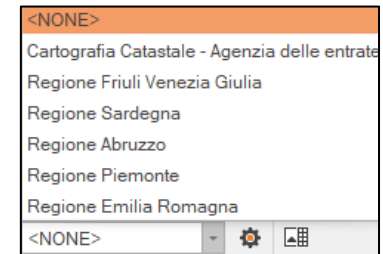
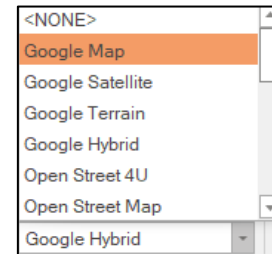
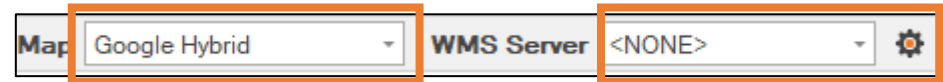
# WEB MAPS

From Map menu It is possible to select different online maps, select or connect to WMS server maps



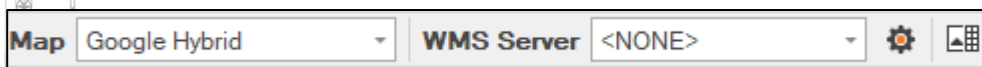
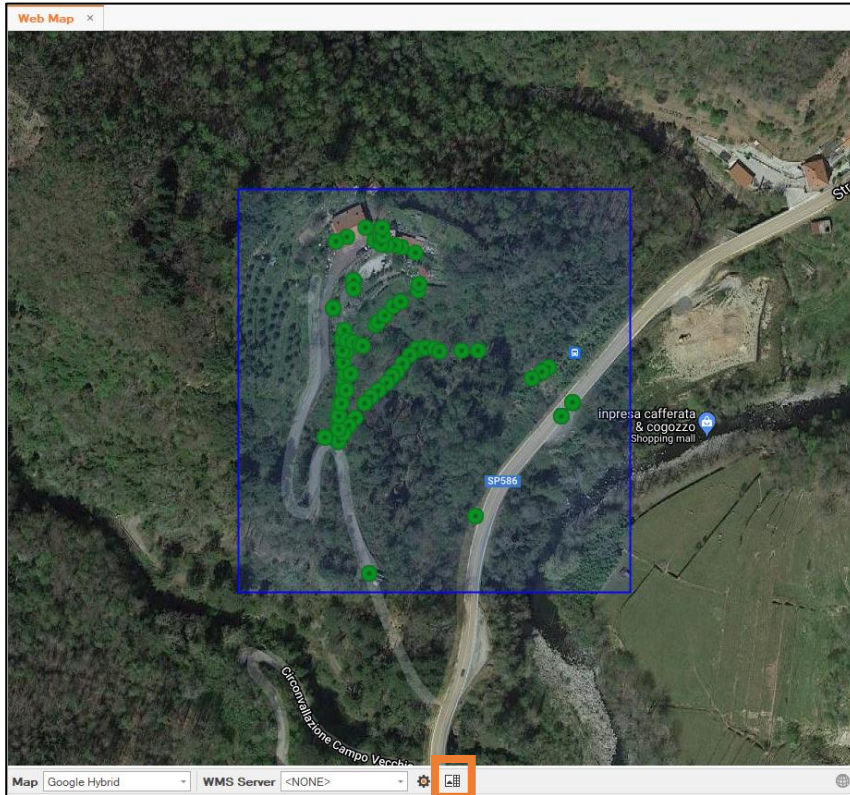
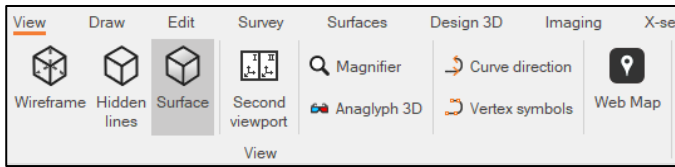
Online

WMS





# WEB MAPS



After selecting Download raster and 3D surface,

It is possible to define an area with:

- Press SHIFT + Selecting area
- ALT + Selecting area



# How create a raster from web map

**Create raster and surface from map**  
Enter parameters for raster map and surface generation.

Create raster map  On

Raster map name:

Zoom level:

---

Create surface  Off

Surface name:

Grid step: E:

Grid step: N:

Estimated points:

Apply raster to surface  Off

- It is possible to export the image as background raster
- Raster is added to the project manager and can be exported in XPAD Field

**Create raster and surface from map**  
Create raster map and surface in progress...

Generating raster map...



# How create a surface from web map

**Create raster and surface from map**  
Enter parameters for raster map and surface generation.

Create raster map  On

Raster map name:

Zoom level:

---

Create surface  On

Surface name:

Grid step: E:

Grid step: N:

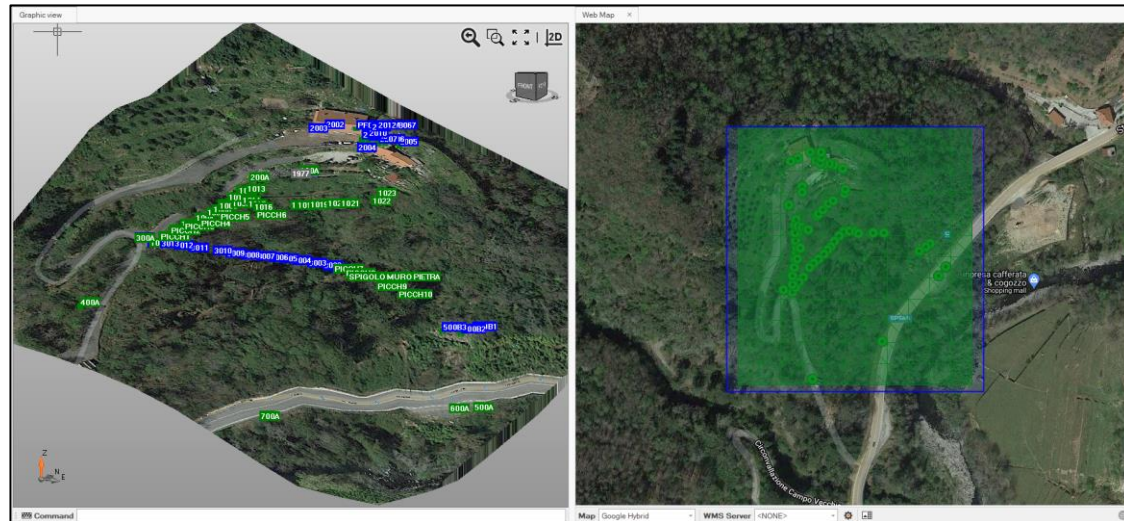
Estimated points:

Apply raster to surface  On

- It is possible to create a surface using the web map elevation model
- Surface is added in the project manager and managed using the surface functions

**Create raster and surface from map**  
Create raster map and surface in progress...

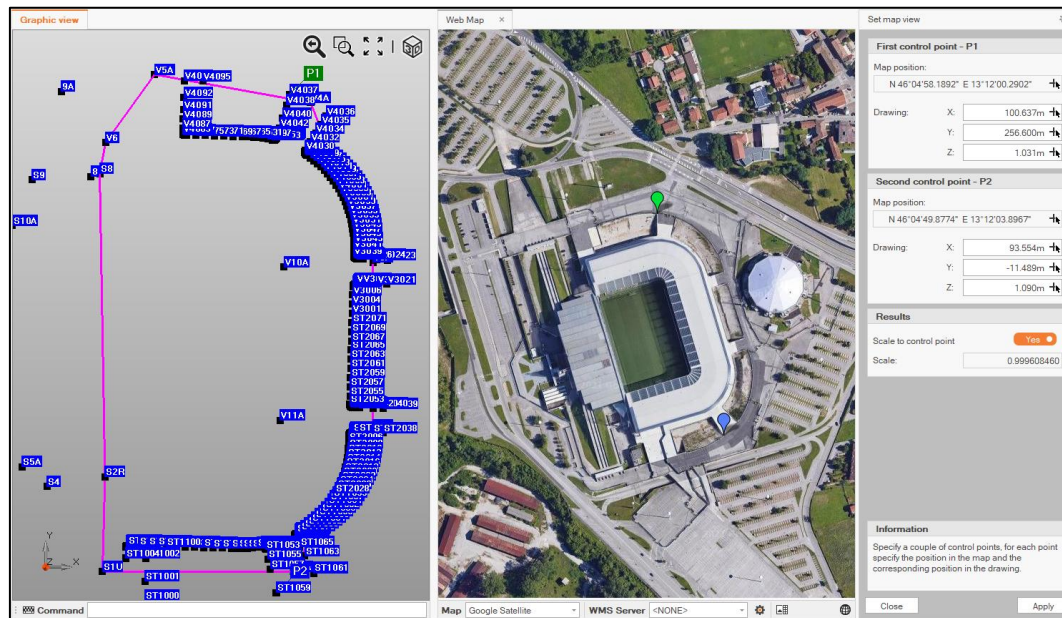
Applying raster map to surface...





# How use web map without GPS measures

- It is possible to use web map also if GNSS coordinates are not available (TPS survey, CAD, etc...)
- Selecting web map, the Set map view tool is started
- Select two control points in the map and view to define the system





# How use web map without GPS measures

