



**TUTORIAL**  
**3D FORMAT FILES**

# 3D Format Files

## DESCRIPTION

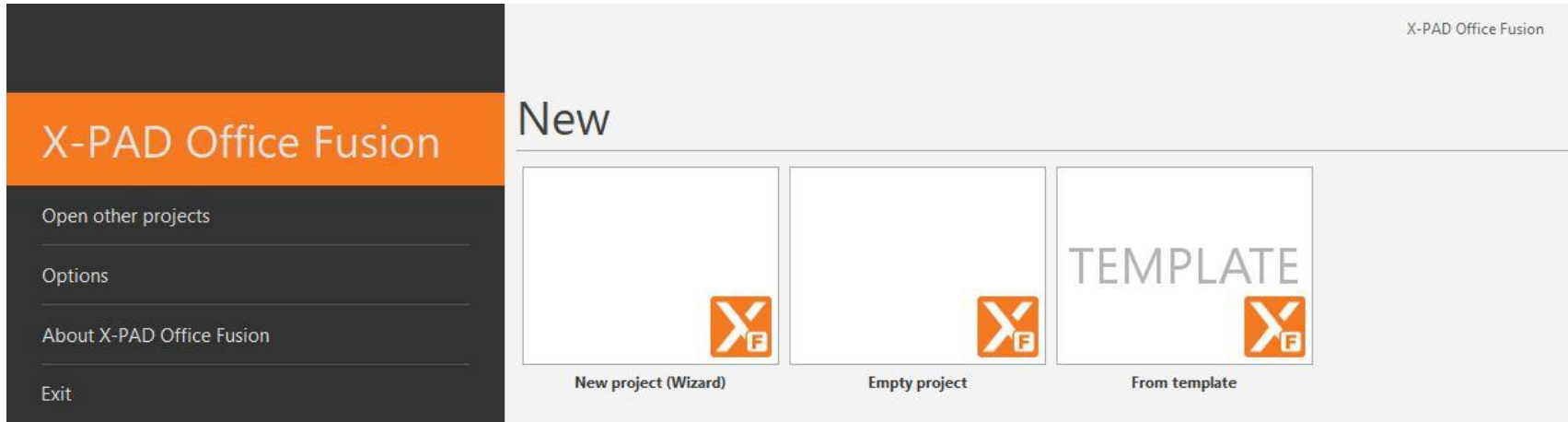
- Import 3D Format Files
- Create points and drawings
- Export and share files

## GOAL

- Import and manage 3D Format Files



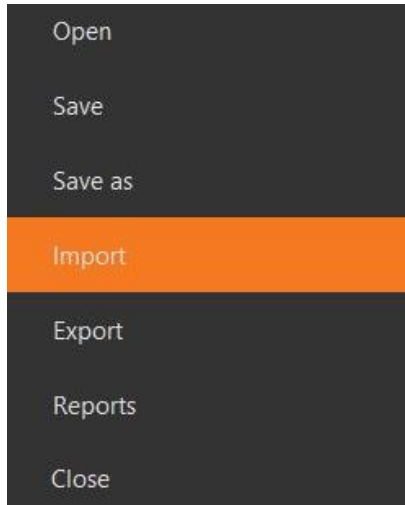
# New Project



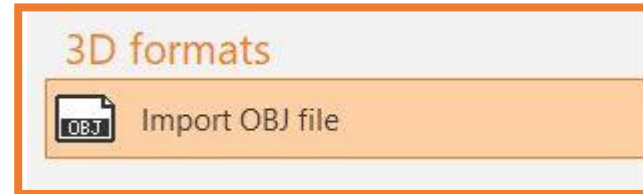
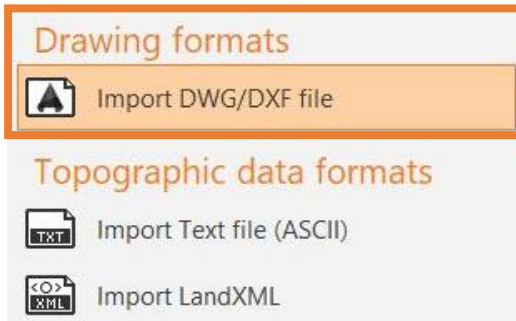
- Click on **Empty Project** to create a new empty project



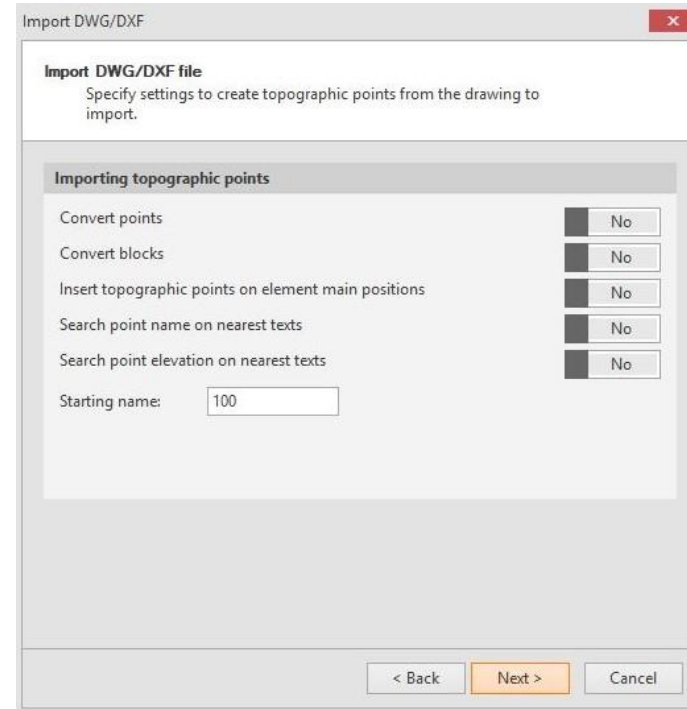
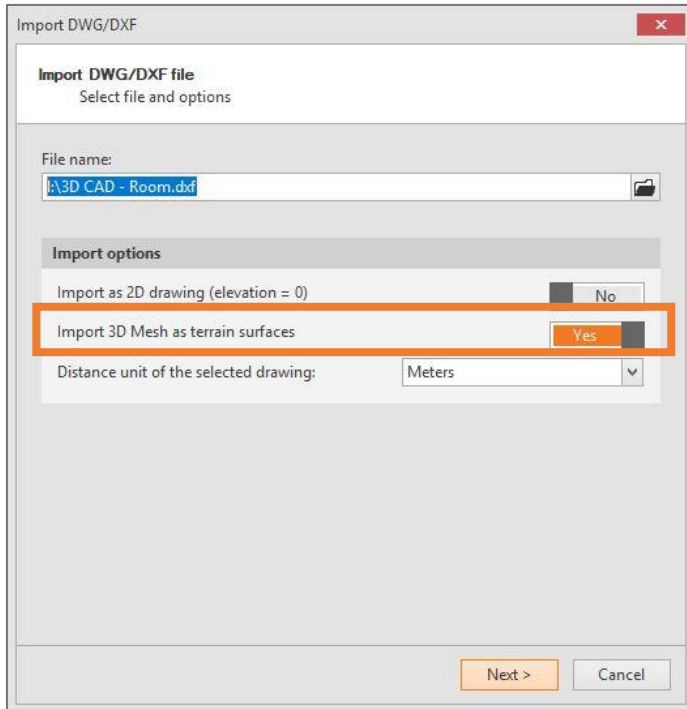
# Import 3D Format Files



- Select **File** menu, than **Import**
- Select File Format:
  - Drawing formats (DWG/DXF) as 3D Mesh
  - 3D formats



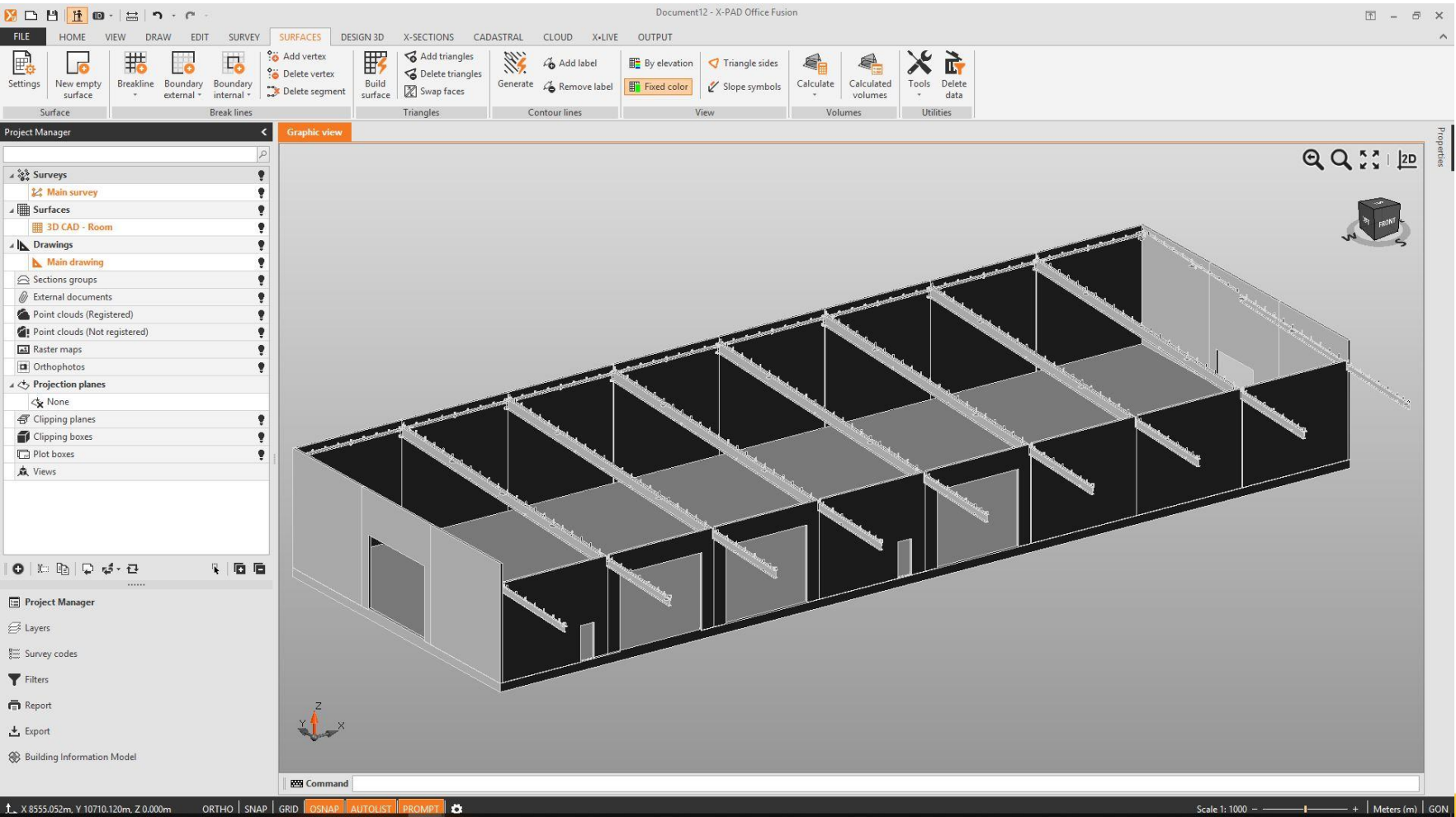
# Import DWG/DXF file - 3D Mesh



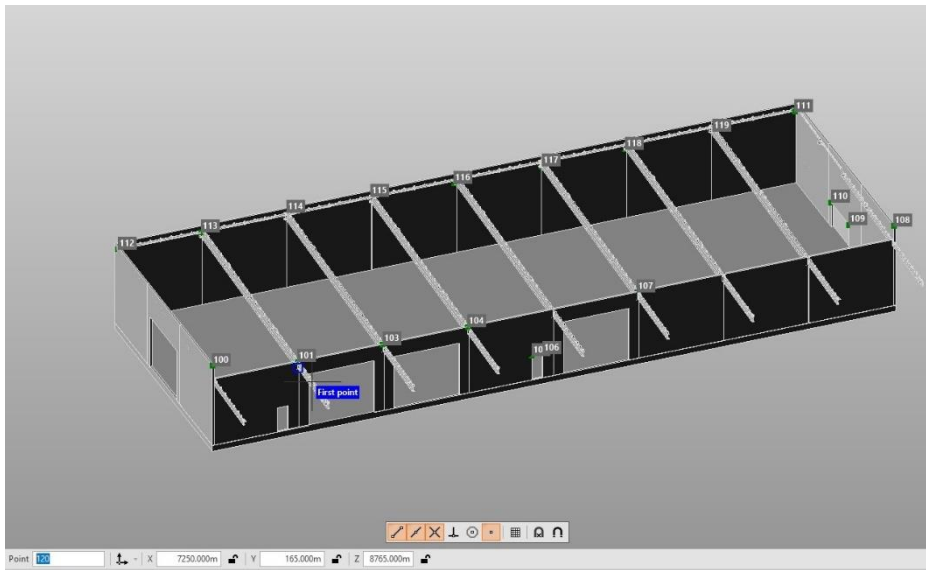
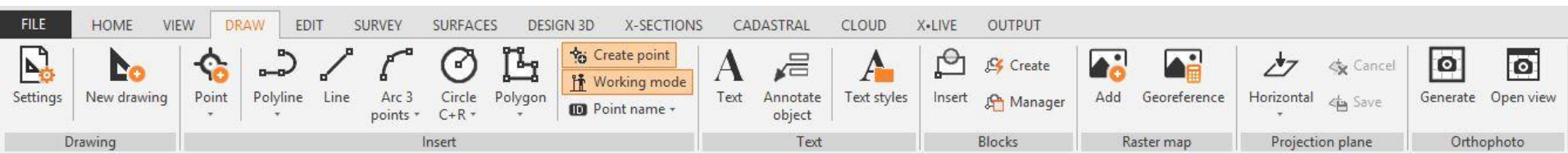
From **Import DWG/DXF file** menu Click on **Import 3D Mesh**  
It is possible to select some tools to import/create topographic points



# Graphic View



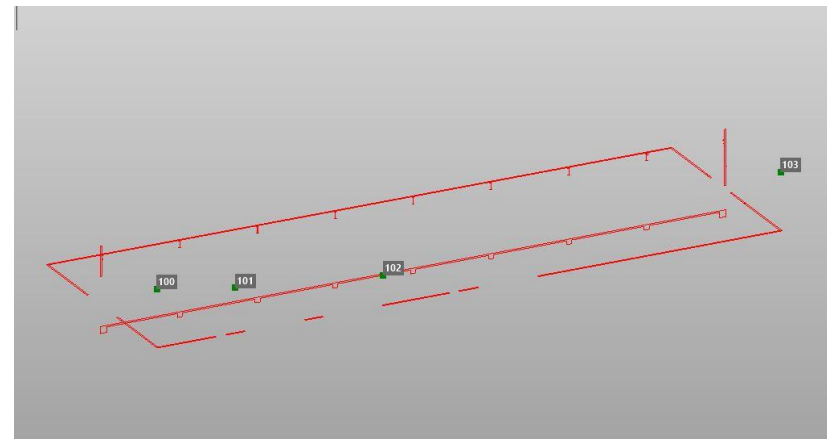
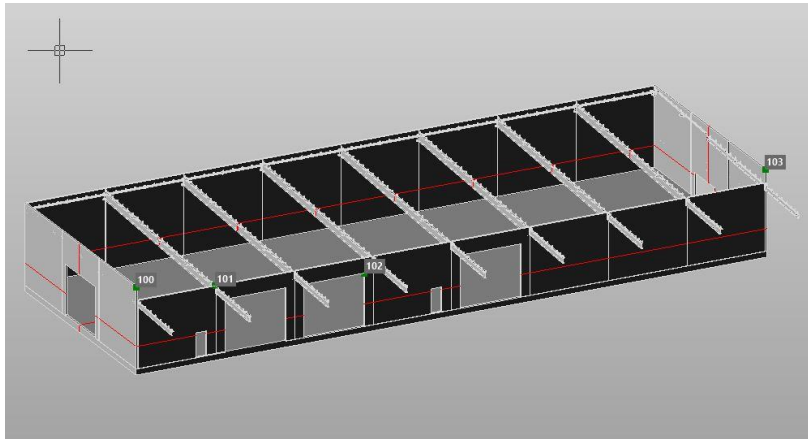
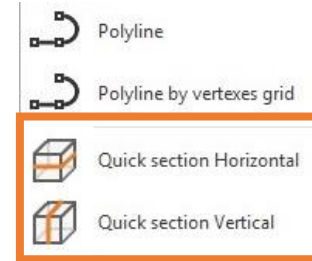
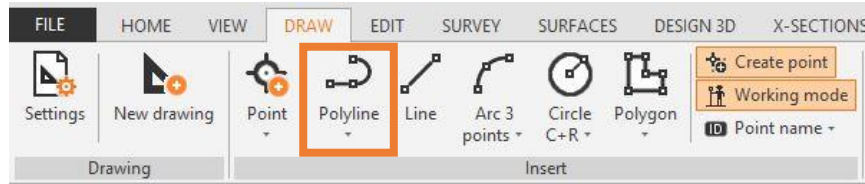
# Draw on 3D Mesh



From **Draw** menu it is possible to select all the tools, from **Point** to **Orthophoto**, to draw directly on the File



# Draw on 3D Mesh

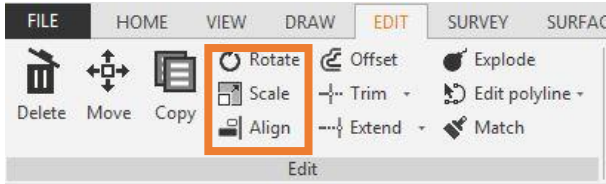


From **Draw** menu it is possible to select all the Polyline Tools to draw a **Quick Horizontal/Vertical Section**

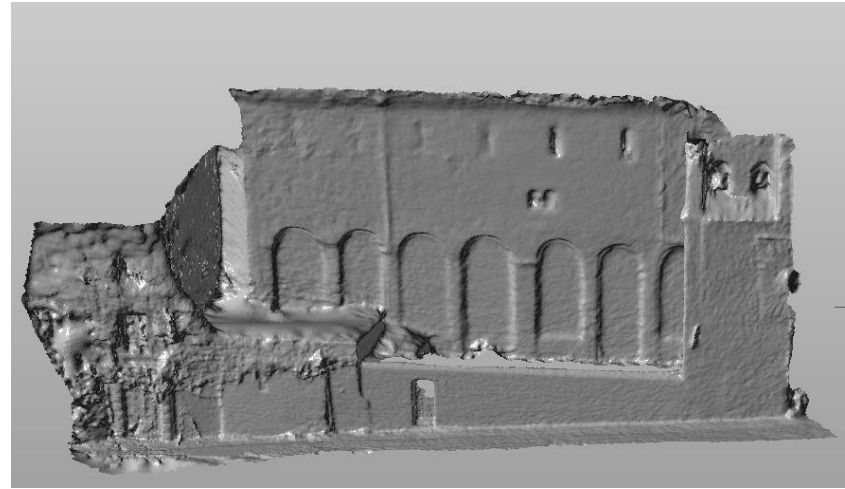




# Import and Manage OBJ Files



Point Clouds Data



3D Mesh - OBJ

From **EDIT** menu it is possible to select **Align Rotate** or **Scale** tool and align the OBJ with topographic data



# Graphic View

tps photogram\_20181026\_165306 - X-PAD Office Fusion

FILE HOME VIEW DRAW EDIT SURVEY SURFACES DESIGN 3D X-SECTIONS CADASTRAL CLOUD X-LIVE OUTPUT

Delete Move Copy Rotate Offset Explode Edit polyline - Open polyline Insert vertex Join polylines Invert polyline Vertices grid Delete Close polyline Delete segment Divide loops Delete

Project Manager

Graphic view

Properties

Surface

Name	wall1
Visible	<input checked="" type="checkbox"/>
Color	240; 0; 0
Transparency (%)	<input type="text"/>
Use unique color	<input type="checkbox"/>
Render mode	Fixed color

Filters

Break lines	<input checked="" type="checkbox"/>
Boundary lines (internal)	<input checked="" type="checkbox"/>
Triangles	<input checked="" type="checkbox"/>
Triangle edges	<input type="checkbox"/>
Contour lines	<input checked="" type="checkbox"/>
Slope direction symbols	<input checked="" type="checkbox"/>
Cut-Fill lines	<input checked="" type="checkbox"/>
Design polylines	<input checked="" type="checkbox"/>

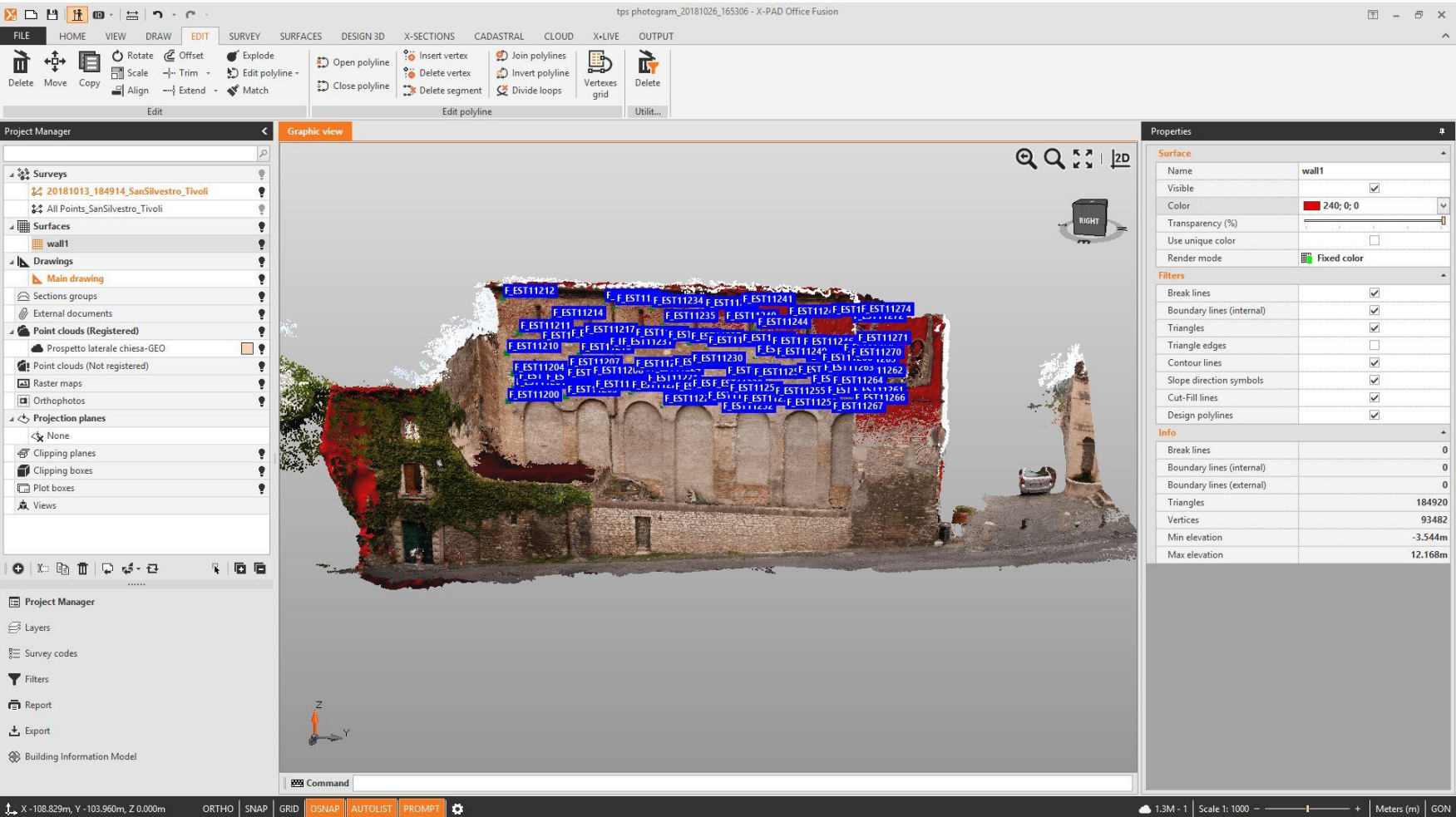
Info

Break lines	0
Boundary lines (internal)	0
Boundary lines (external)	0
Triangles	184920
Vertices	93482
Min elevation	-3.544m
Max elevation	12.168m

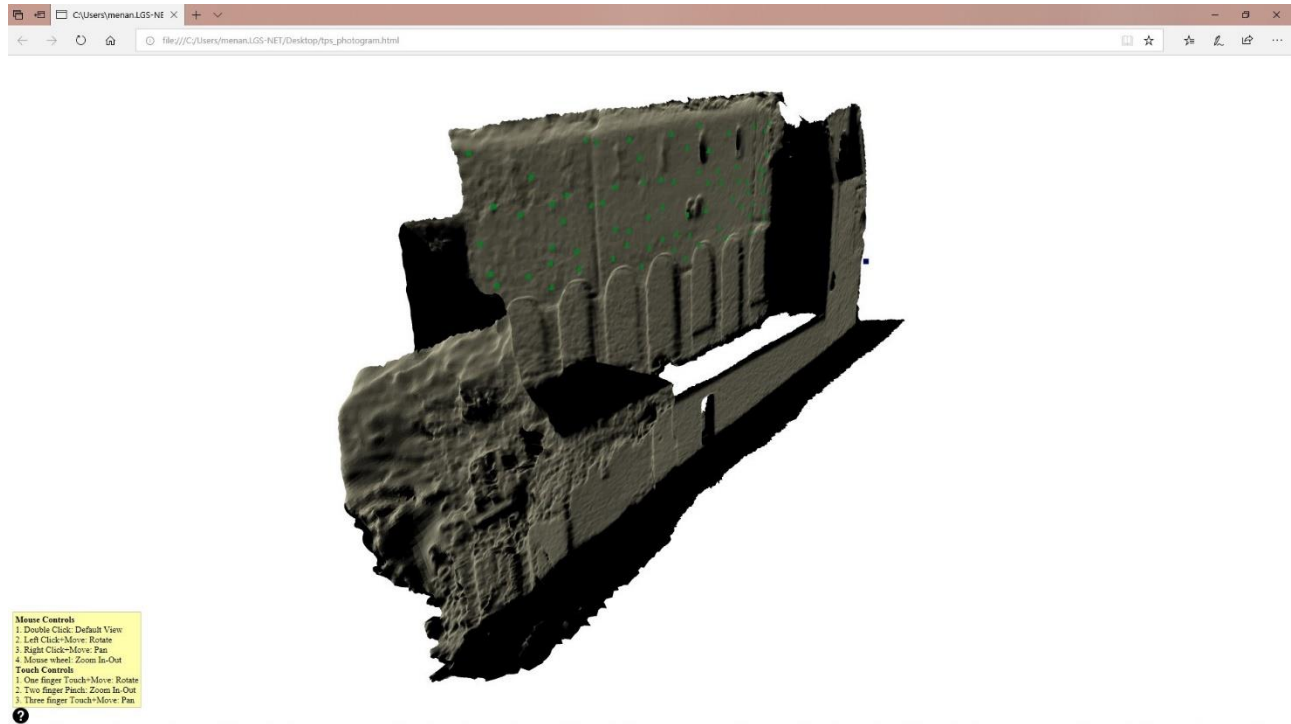
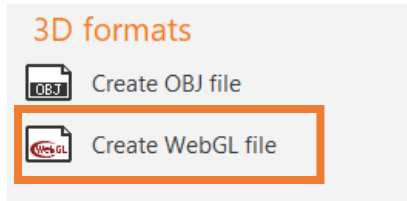
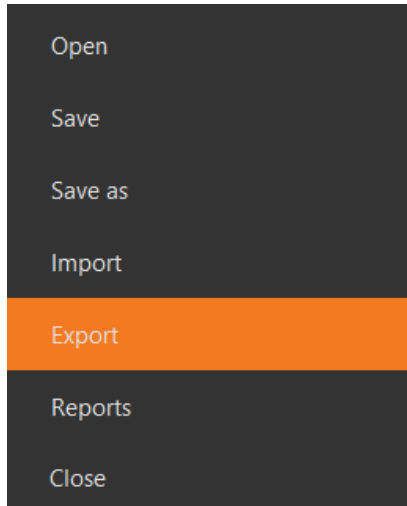
Command

X -108.829m, Y -103.960m, Z 0.000m ORTHO SNAP GRID CSNAP AUTOLIST PROMPT

1.3M - 1 | Scale 1: 1000 | Meters (m) GON




# Export 3D Formats



From **Export** menu select **Create WebGL file**  
 It is possible to share data as **html** viewer

